

DESIGN AND MEDIA LLP | MUMBAI | EST. 2017

Bricolage Bombay.

Crafting Memorable *Hospitality* Destinations

Creating memorable destinations through architecture, interiors, lighting, and guest-centric design.

■
Designing Unique
Hospitality
Experiences
Across Diverse
Geographies and
Cultures.

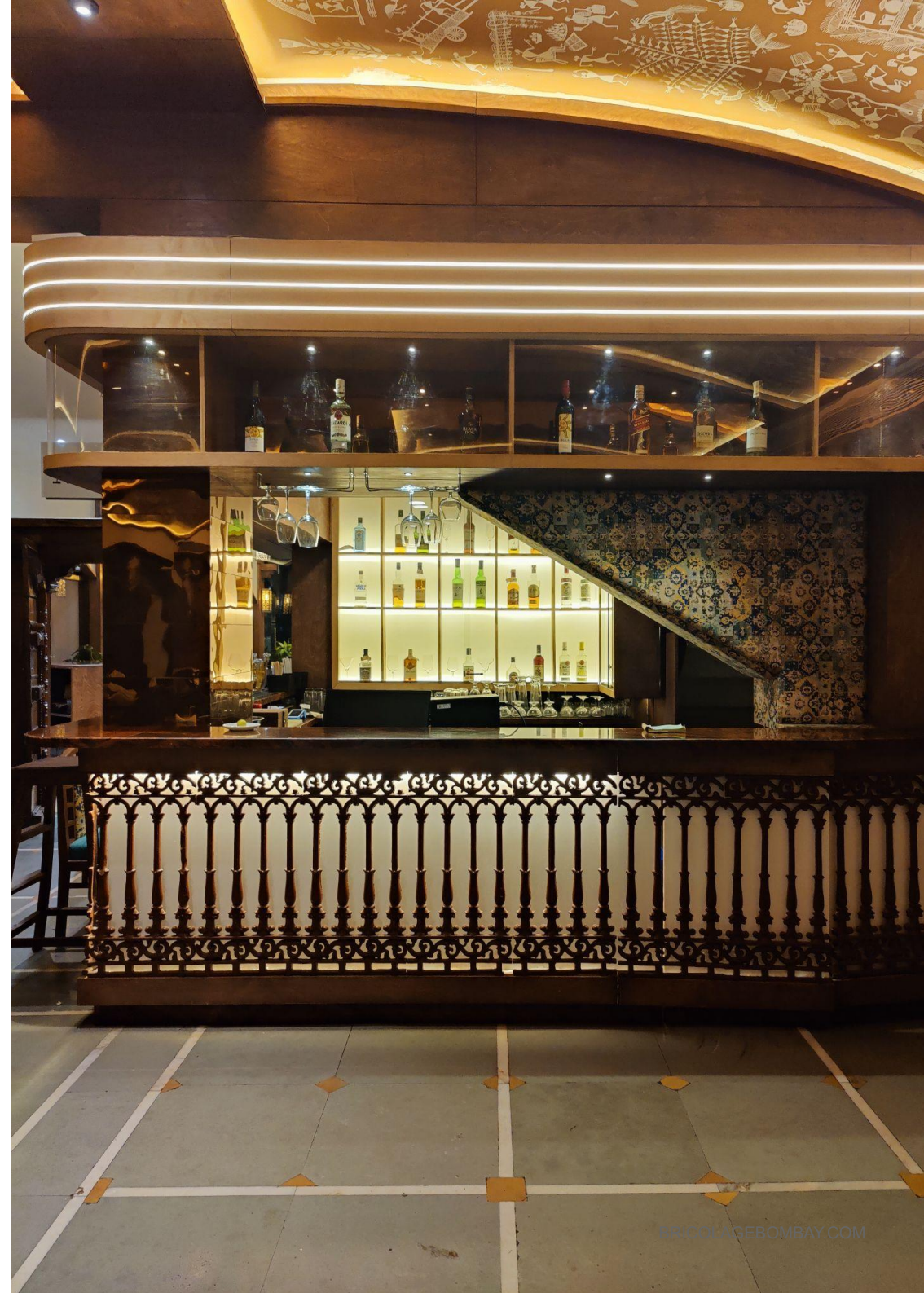




Our *hospitality portfolio* spans hotels, resorts, restaurants, clubs, and retreats, each thoughtfully designed to reflect its unique location, audience, and experience.



From Urban Hotels to Destination Retreats, Crafting Hospitality with Purpose.



Project Index.

01
AVHYAY RESORT | Virar, Maharashtra.

02
CASA CABANA VILLAS | Virar, Maharashtra.

03
CASA FORESTA SUITES | Virar, Maharashtra.

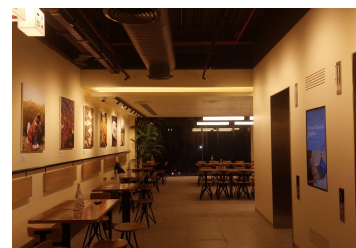
04
BASTIAN RIVIERA -RESTAURANT | Morjim, Goa.

05
BASTIAN RIVIERA -SWIM UP ROOMS | Morjim, Goa.

06
YACHT CLUB | Morjim, Goa.

07
SUBKO CAFE | Lower parel, Mumbai.

08
INDRIYA MISHRAN | Andheri E, Mumbai





01. AVHYAY RESORT | Virar | Maharashtra.

Where Heritage Meets Hospitality

Virar, Maharashtra. | KT Group | 520,000 Sqft | Hospitality, Completed

• MASTER PLANNING • ADAPTIVE REUSE • LIGHTING, MATERIAL & FINISH DEVELOPMENT • CUSTOM DETAILING • PROJECT EXECUTION • INTERIORS • OPERATIONAL PLANNING

Avhyay Resort is a hospitality-led adaptive reuse and renovation project by Bricolage Bombay, set within a twelve-acre forest landscape bordering the Tungareshwar Wildlife Sanctuary in Virar. Originally designed in 1985, the resort was thoughtfully reimaged for contemporary hospitality while preserving the architectural integrity of the original structure and its deep connection to nature. Through carefully crafted arrival experiences, reclaimed architectural artifacts, sustainable material palettes, and culturally rooted design interventions, the project creates a seamless dialogue between heritage, landscape, and modern luxury. The result is a destination that celebrates India's craftsmanship traditions while offering guests an immersive and memorable hospitality experience.

Reimagining Heritage Through Hospitality.

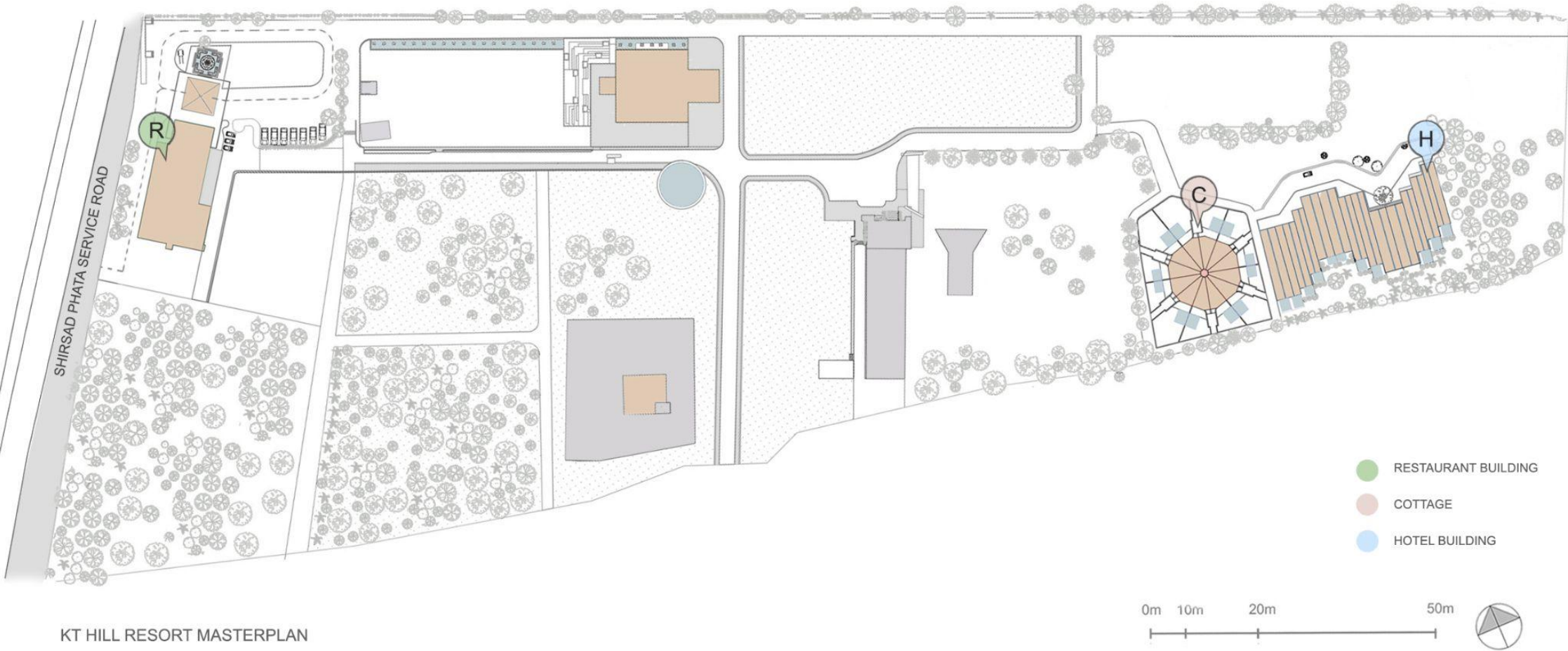


Conservation Through Reinvention

The project carefully balances preservation and transformation, respecting the original architecture while adapting it for contemporary hospitality.



Avhyay Resort reimagines a 1980s forest retreat through a design approach rooted in adaptive reuse, sustainability, and cultural craftsmanship. Blending heritage artifacts, natural materials, and immersive hospitality experiences, the project creates a destination where architecture, landscape, and storytelling come together seamlessly.



KT HILL RESORT MASTERPLAN

Designed Around the Forest.

Led the planning and design of guest arrival experiences, public spaces, circulation strategies, hospitality interiors, technical drawings, and execution documentation.

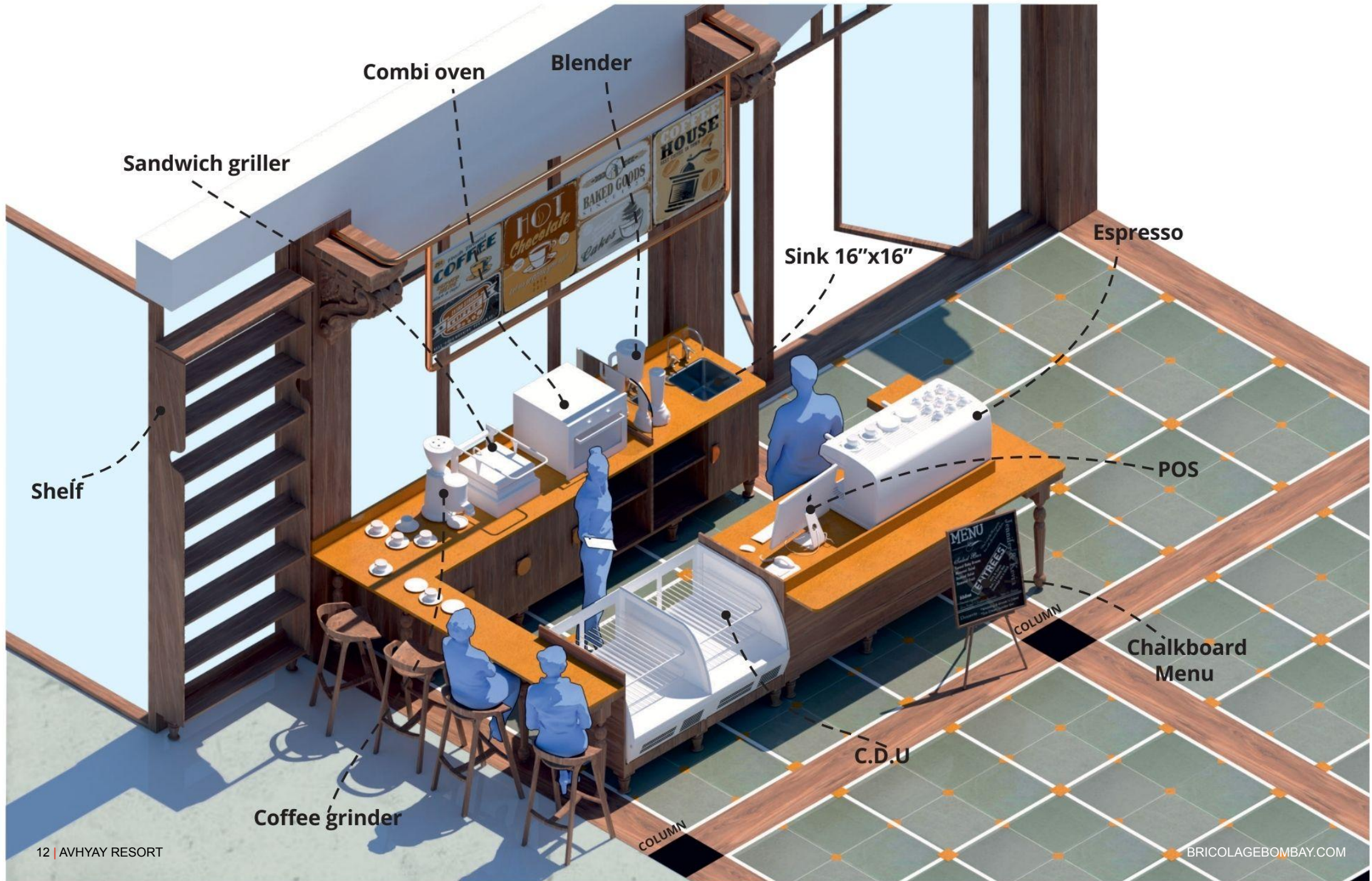


Developed master planning, space planning, architectural layouts, adaptive reuse strategies, detailed design drawings, construction documentation, interior detailing, custom furniture drawings, coordination drawings, and execution packages for the complete hospitality renovation.



Cafe Karma is a bespoke hospitality café experience designed by Bricolage Bombay as part of the arrival lobby at Avhyay Resort. Conceived as both a branded touchpoint and a functional hospitality amenity, the project integrates architecture, interior design, and brand identity into a single cohesive experience. Defined by a reclaimed iron facade sourced from a historic jail structure in Ahmedabad, the counter embodies the studio's philosophy of adaptive reuse and material storytelling. Through carefully crafted detailing, warm material palettes, and integrated branding, Cafe Karma transforms a simple coffee counter into a memorable expression of the resort's larger design narrative.

The Art of Arrival Begins with Coffee.



Reclaimed with Purpose

Historic materials are given new life through thoughtful adaptation and contemporary design.



Maricca Restaurant is an adaptive reuse and hospitality renovation project at Avhyay Resort, where Bricolage Bombay carefully reimagined an iconic restaurant originally designed in the 1980s. Guided by a philosophy of preservation and thoughtful intervention, the project retains key architectural and cultural elements—including the original Warli-painted ceiling and bespoke furniture—while introducing contemporary hospitality upgrades. Through strategic planning, expanded dining experiences, a new bar, outdoor forest-facing seating, and curated craft-inspired interventions, Maricca demonstrates how heritage spaces can evolve without losing their identity. The result is a restaurant that feels authentic, timeless, and deeply connected to both its history and its natural surroundings.

A Restaurant Reimagined, Not Replaced.

Maricca

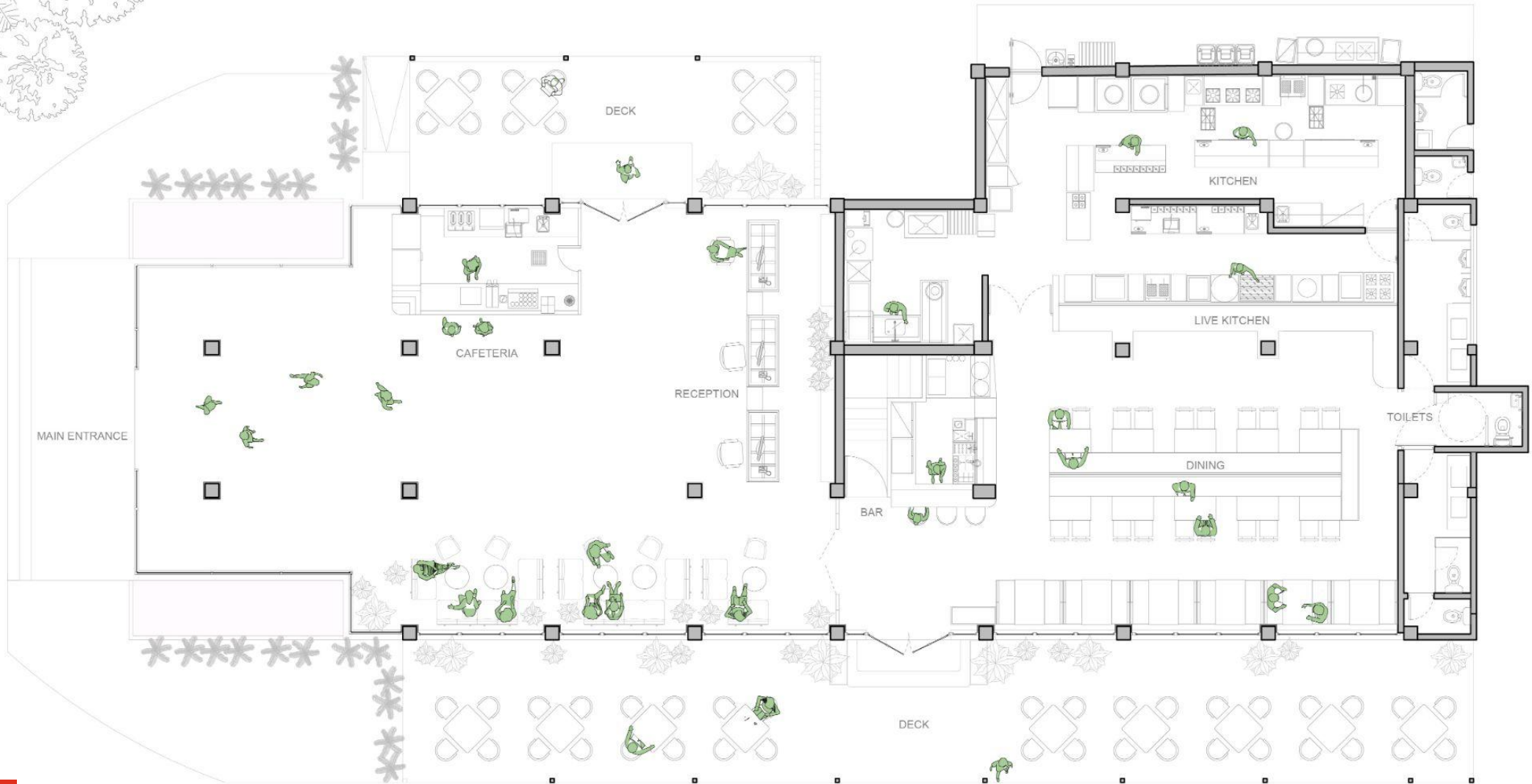
The Art of Adaptive Hospitality.

Maricca Restaurant is a hospitality renovation project that balances preservation with contemporary enhancement. By restoring key architectural features such as the iconic Warli-painted ceiling and original furniture while introducing a new bar, expanded kitchen, and forest-facing outdoor dining deck, the project creates a renewed dining destination rooted in authenticity and place. Through careful planning and culturally informed design interventions, the restaurant celebrates both its heritage and its future.



The restaurant's connection to the Tungreshwar forest transforms every meal into an immersive hospitality experience.

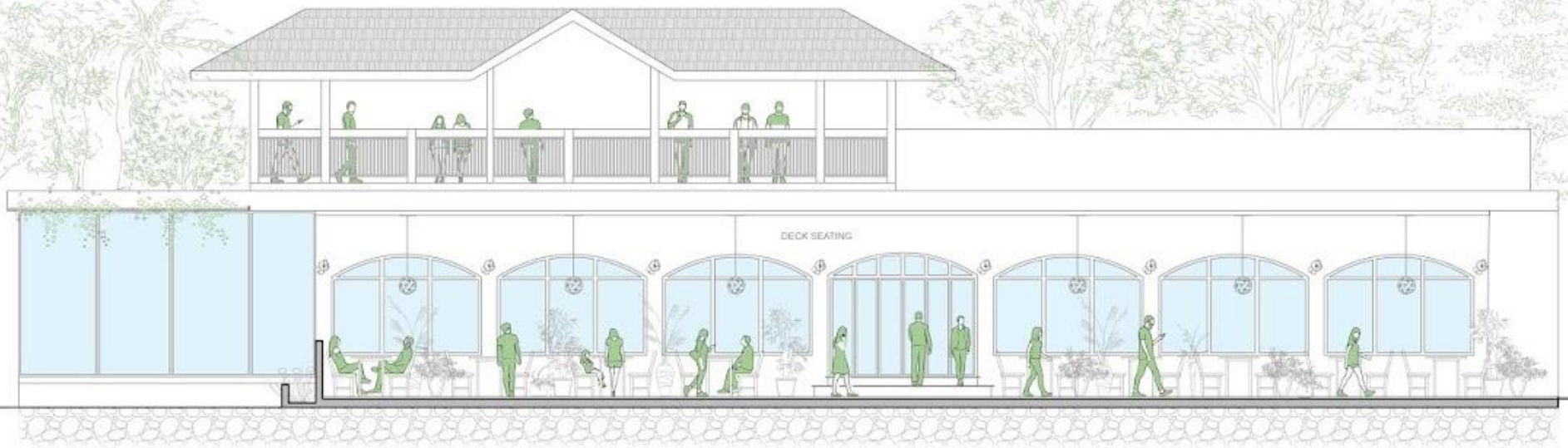




RESTAURANT BUILDING PLAN

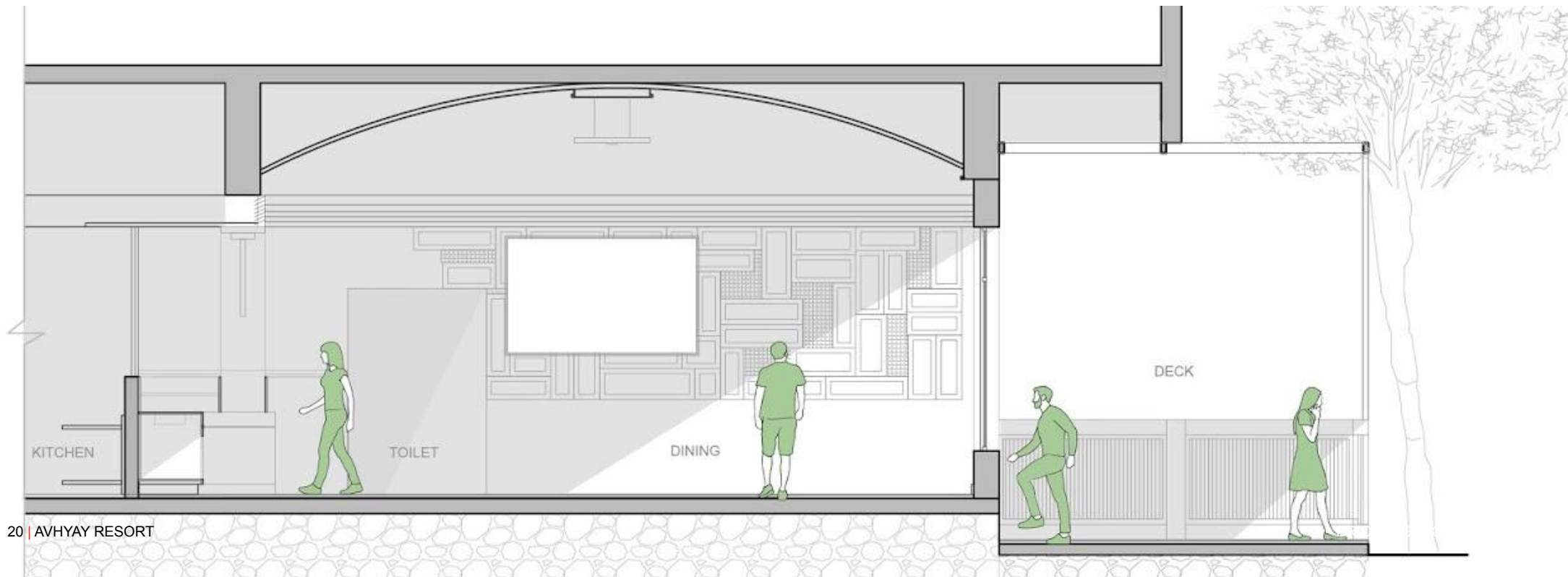
0m 5m 15m

The renovation of Maricca extended beyond interiors to include a comprehensive architectural and planning strategy. Existing layouts were carefully studied and reconfigured to accommodate an expanded kitchen, a new bar, and a forest-facing outdoor dining deck while preserving the restaurant's original spatial character. Detailed architectural drawings, construction documentation, joinery details, and execution packages ensured that every new intervention integrated seamlessly within the existing structure, allowing the building to evolve without losing its identity.



FRONT ELEVATION

0m 5m 15m





02. CASA CABANA VILLAS| Virar, Maharashtra.

■ Designing Above the Canopy.

Virar, Maharashtra. | KT Group |520,000 Sqft|Hospitality, Completed

• MASTER PLANNING • ADAPTIVE REUSE • LIGHTING, MATERIAL & FINISH DEVELOPMENT • CUSTOM DETAILING • PROJECT EXECUTION • INTERIORS • OPERATIONAL PLANNING

Casa Cabana Villas is a hospitality renovation and adaptive reuse project comprising twelve forest-edge cottages at Avhyay Resort. Originally constructed in 1985, the villas were reimagined by Bricolage Bombay to enhance their connection to nature while elevating guest comfort to contemporary luxury standards. Through strategic architectural interventions, including the restoration of double-height volumes, insertion of mezzanine lofts, internal reconfiguration of bathrooms, and integration of private pools and landscaped decks, the project transforms modest cottages into immersive forest retreats. The result is a hospitality experience that balances simplicity, sustainability, and luxury within the natural setting of the Tungareshwar Forest.

Restored the original cottage volumes through strategic architectural interventions and adaptive reuse planning.



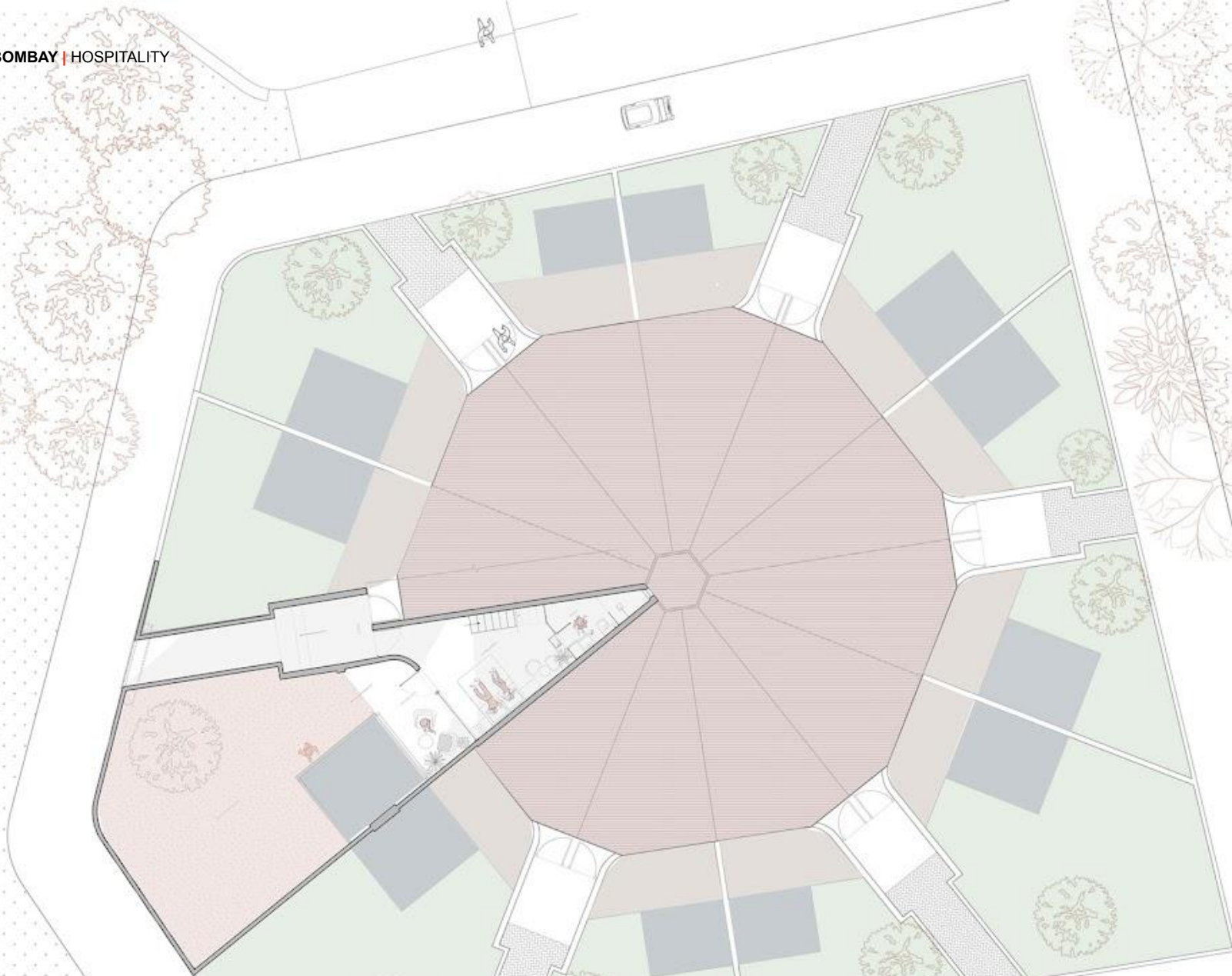
Framing Luxury Through Architecture

By removing decades of modifications and restoring the original roof structure, the villas regain their spatial generosity and architectural clarity.

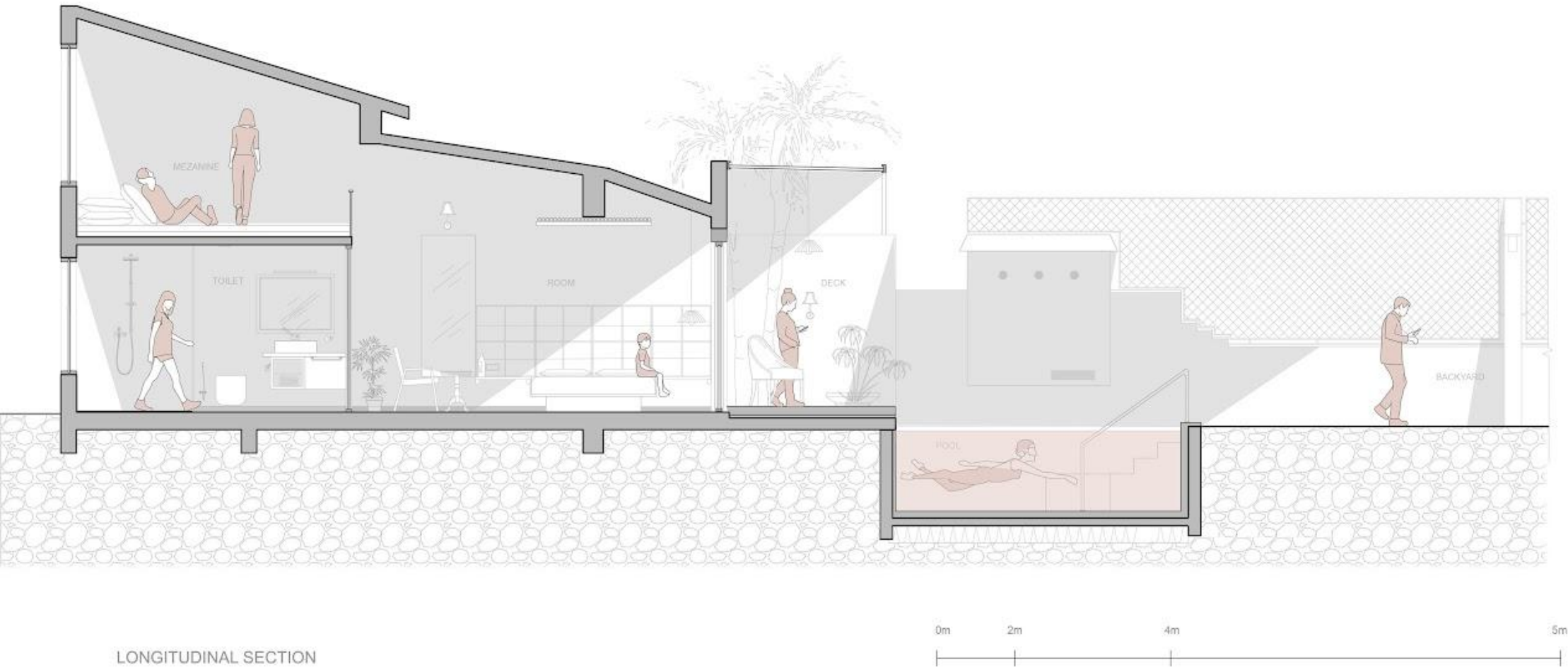


Hospitality Beyond the Room

Private pools, decks, and landscaped gardens extend the living experience beyond the cottage walls. The villas are designed to encourage slower rhythms, deeper relaxation, and meaningful engagement with the landscape.



The transformation of the Casa Caban Villas began with a detailed architectural study of the existing cottages, their structural systems, spatial volumes, and relationship to the surrounding landscape. By removing the false ceilings added over decades, the original height and character of the structures were restored, allowing the design team to introduce mezzanine levels and create entirely new spatial experiences within the existing footprint.



LONGITUDINAL SECTION

Extensive planning and architectural documentation were developed to integrate new sleeping lofts, internalized bathrooms, poolside decks, and landscape interventions while preserving the simplicity of the original architecture. Rather than expanding the cottages outward, the design unlocks latent potential within the existing structures, demonstrating how careful planning and adaptive reuse can transform hospitality experiences without compromising the integrity of the original building.

■ Where Products Become Experiences.

Virar, Maharashtra. | KT Group |520,000 Sqft|Hospitality, Completed

• MASTER PLANNING • ADAPTIVE REUSE • LIGHTING, MATERIAL & FINISH
DEVELOPMENT • CUSTOM DETAILING • PROJECT EXECUTION • INTERIORS •
OPERATIONAL PLANNING

Casa Foresta Suites is a comprehensive hospitality retrofit and renovation project comprising twenty-four guest rooms within the main hotel block at Avhyay Resort. Designed by Bricolage Bombay, the project transforms an existing 1985 structure into a contemporary luxury hospitality destination through architectural upgrades, complete services modernization, and nature-focused guest experiences. Ground-floor suites open onto private pools and landscaped gardens, while upper-level rooms feature expansive decks overlooking the Tungareshwar Forest canopy. Through the use of natural materials, sustainable design principles, and thoughtful architectural planning, the project creates an authentic hospitality experience deeply connected to its environment.

Complete retrofit and modernization of a 24-key hospitality accommodation block.

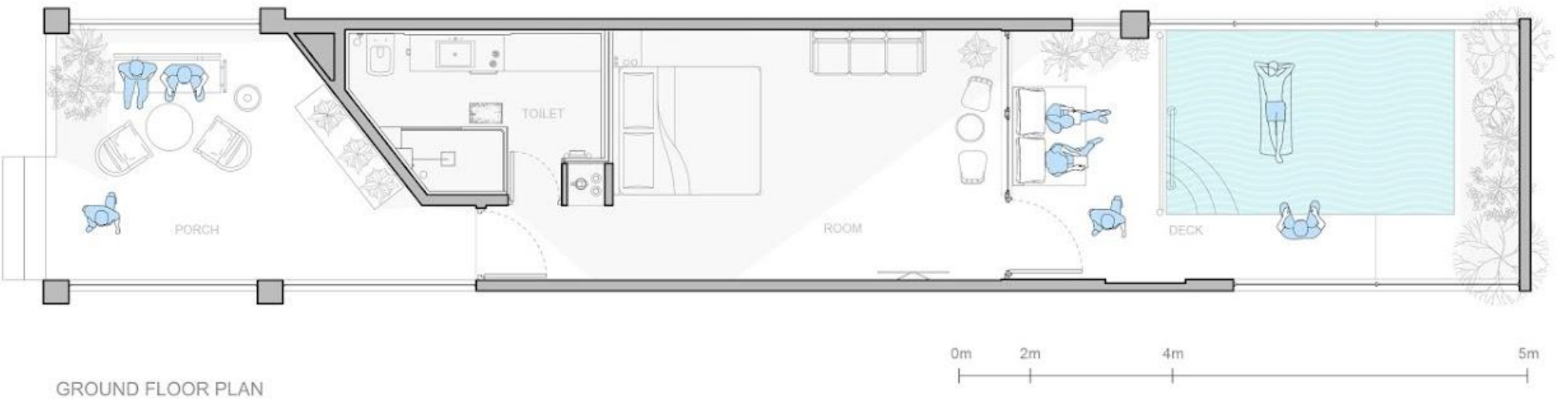
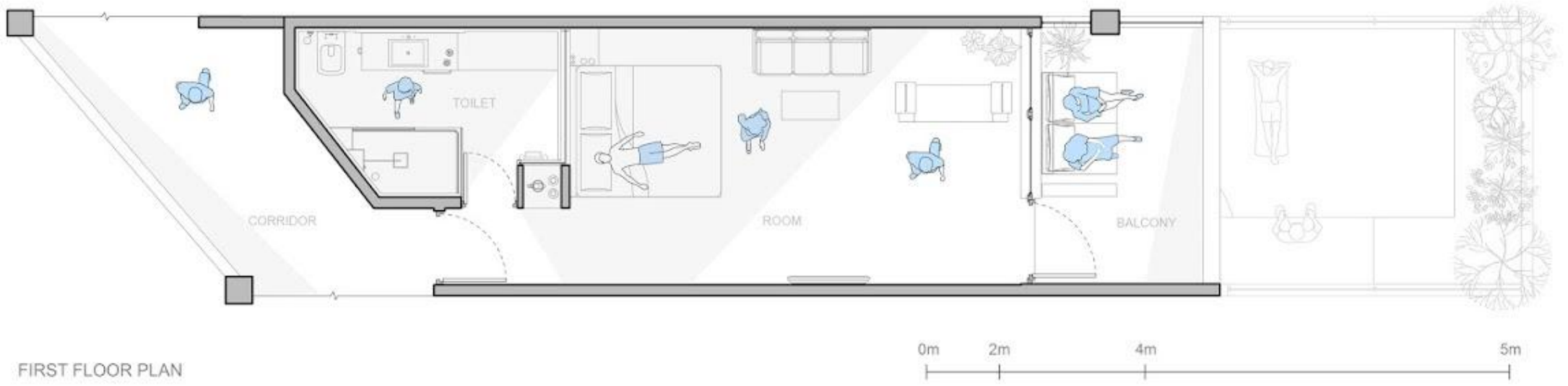


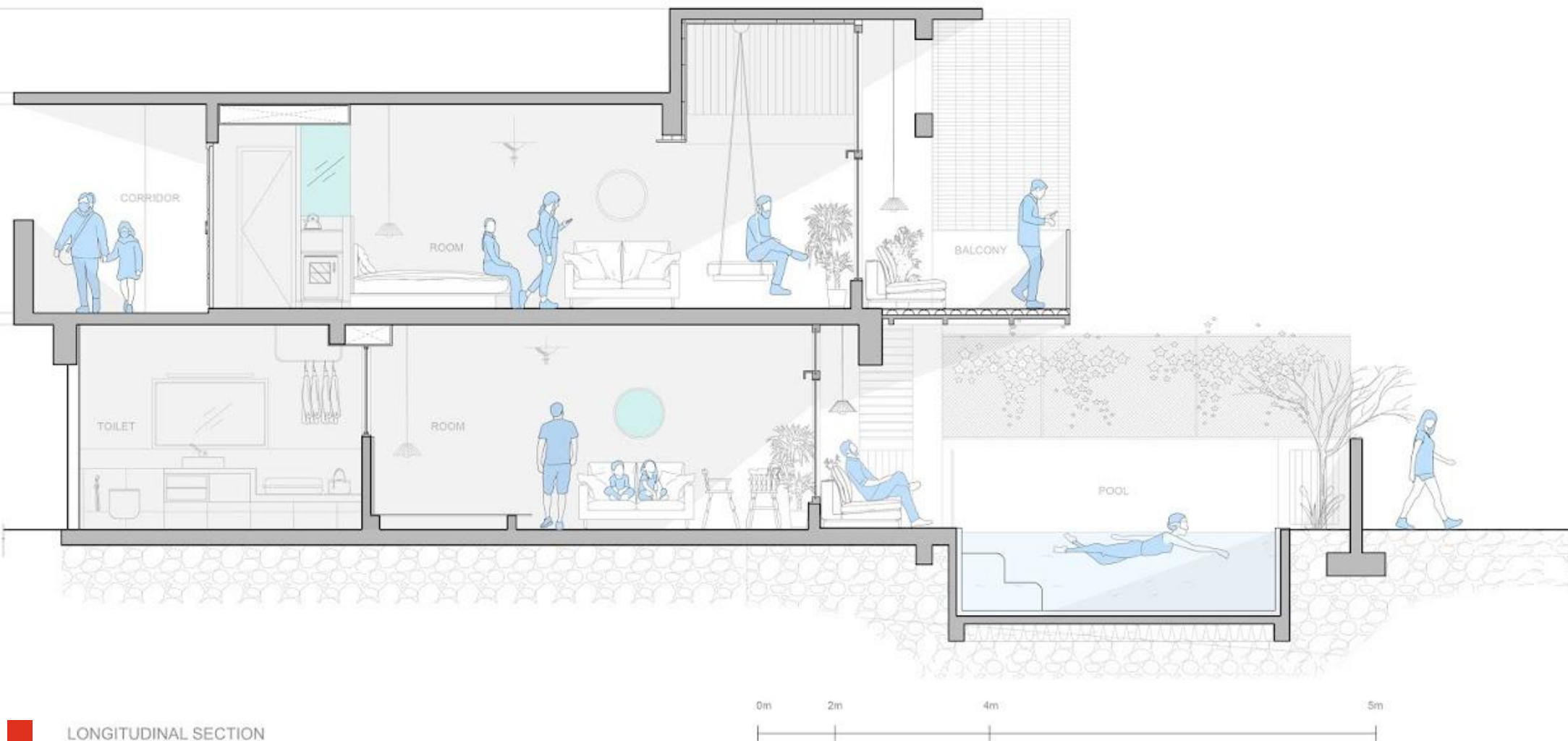
Retrofitted for comfort, rooted in context.

Architectural planning and room layout optimization for contemporary guest experiences.



The transformation of Casa Foresta Suites began with a comprehensive architectural and technical retrofit of the existing hotel block. Extensive planning studies, renovation strategies, service coordination drawings, and construction documentation were developed to upgrade HVAC, plumbing, electrical systems, and guest facilities while preserving the integrity of the original structure. Room layouts were carefully reconfigured to improve functionality, comfort, and guest experience, while private pools, decks, and landscape connections were seamlessly integrated into the architectural framework.





LONGITUDINAL SECTION

Reinventing Hospitality from the Inside Out .

Integration of private pools, garden suites, and elevated forest-view decks.

04. BASTIAN RIVIERA -RESTAURANT | Morjim, Goa.

■ A Restaurant Beyond the Ordinary

Morjim,Goa | Carrick Bend Realty | Bastian Hospitality | 4,530 sqft |
Luxury Resort Plus restaurant

• MASTER PLANNING • ARCHITECTURE • MEP • PROJECT EXECUTION • OPERATIONAL
PLANNING





The **Pyramid at Bastian Riviera** is a landmark hospitality destination designed by Bricolage Bombay as the centerpiece of the Riviera waterfront development in Morjim, Goa. Conceived as a signature restaurant, beach club, and social hub, the project combines iconic architecture, immersive dining experiences, and landscape-driven hospitality. Defined by its striking glass-and-steel pyramid structure overlooking the Chapora River, the project creates a memorable destination where architecture, hospitality, and nature converge. By day, it functions as a light-filled dining pavilion and beach club; by night, it transforms into an illuminated social destination at the heart of the Riviera masterplan.

The project began with the ambition to create a hospitality destination that would become the visual and experiential anchor of the Riviera masterplan. The architectural planning focused on maximizing river views, optimizing guest circulation, and establishing a strong identity visible from across the waterfront. The pyramid form was carefully developed to create a large unobstructed dining volume while responding efficiently to Goa's climate through its structural geometry and roof profile.



MORJIM RIVIERA MASTERPLAN

LEGEND

- 1 MAIN ENTRY
- 2 PARKING
- 3 MHB NORTH WING
- 4 MHB SOUTH WING
- 5 UTILITY BUILDING
- 6 LANDSCAPING
- 7 SWIM-UP ROOMS
- 8 NORTH DECK
- 9 FRONT RIVER
- 10 OUTDOOR SEATING
- 11 MAIN HOTEL BUILDING
- 12 RESTAURANT
- 13 STAIRS
- 14 BAR COUNTER
- 15 YACHT CLUB
- 16 SOUTH DECK
- 17 OWNERS PRIVATE PROPERTY



Led the design and development of a landmark hospitality destination, integrating architecture, restaurant planning, beach club experiences, landscape design, technical documentation, and execution coordination within a waterfront resort masterplan.





A Landmark for Dining and Celebration

An immersive hospitality destination overlooking the Chapora River.

■
*An Icon
on the Waterfront*





■
An Experience Framed by
Geometry.



Building a Landmark, Not Just a Restaurant

Designed as a gathering place, remembered as a landmark.



The social centerpiece of the Riviera masterplan.



05. BASTIAN RIVIERA -SWIM UP ROOMS | Morjim, Goa.

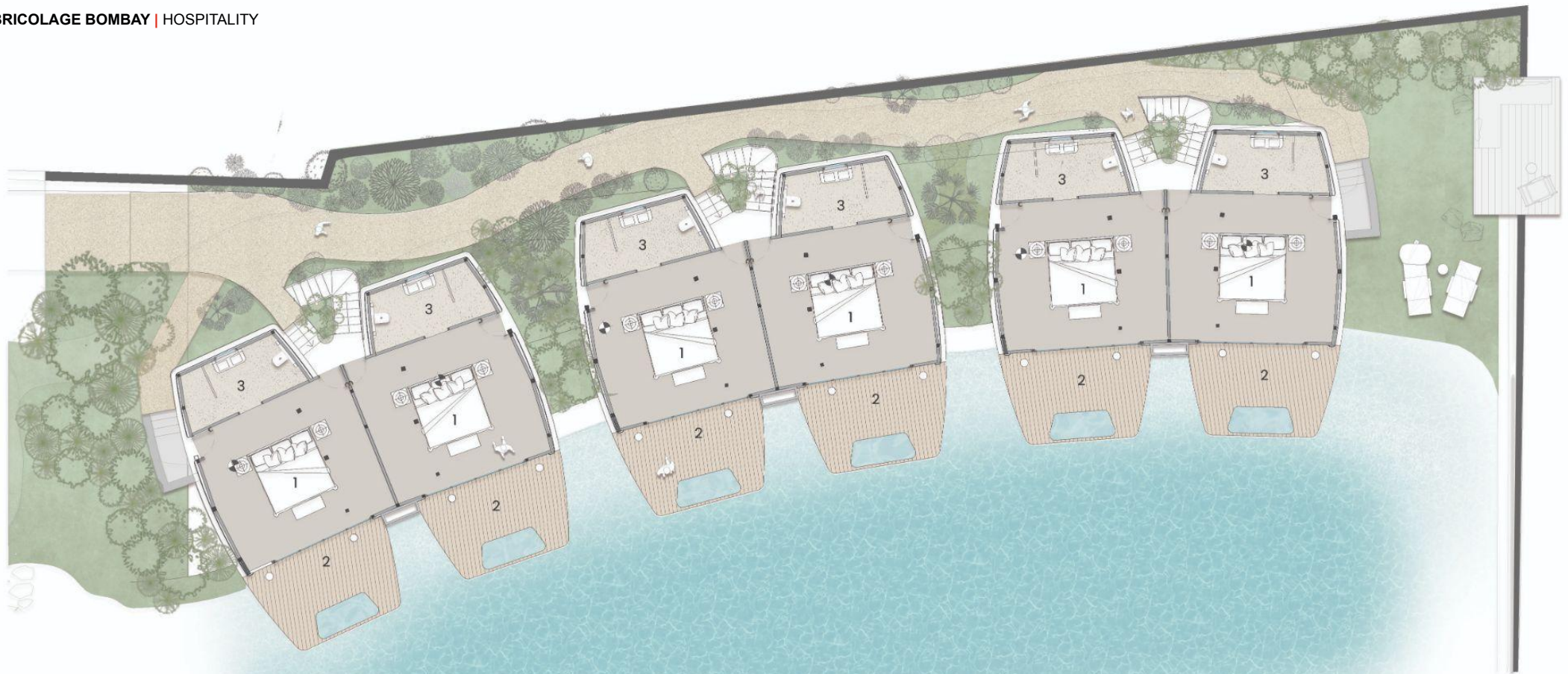
■ Living on the Water's Edge

Morjim, Goa | Carrick Bend Realty | Bastian Hospitality | 6 X 500 sqft
| Luxury Stay Rooms

• MASTER PLANNING • ARCHITECTURE • MEP • PROJECT EXECUTION • OPERATIONAL
PLANNING

Riviera Swim-Up Rooms are a collection of luxury waterfront hospitality suites designed by Bricolage Bombay at Riviera, Morjim. Positioned along the edge of the Chapora backwaters, the project reimagines the relationship between architecture, water, and landscape through a seamless swim-up experience. Each room opens directly onto a private deck and shared infinity pool, creating an immersive hospitality environment where the boundaries between room, water, and river dissolve. The result is a contemporary luxury retreat defined by simplicity, tranquility, and a deep connection to its natural setting.

Where Room Meets River



LEGEND
 1 BEDROOM
 2 DECK
 3 TOILET



0 1 2 5

Building a Relationship with the Landscape

The Riviera Swim-Up Rooms were carefully planned to integrate hospitality, landscape, and water into a seamless guest experience. Architectural layouts, pool-edge detailing, deck planning, lighting strategies, and waterfront design were developed together to create a continuous transition from room to pool to river. Through detailed planning and precise execution, the project transforms a luxury accommodation typology into an immersive architectural experience shaped by its natural setting.



Luxury at the Water's Edge.

Designed and developed luxury swim-up hospitality suites integrating architecture, pool design, landscape planning, guest experience design, technical documentation, and waterfront hospitality environments.



■
Immersed in Nature.





06. YACHT CLUB | Morjim, Goa

■ The Art of Waterfront Arrival

Morjim, Goa | Carrick Bend Realty | 825 sqft | Club

• MASTER PLANNING • ARCHITECTURE • MEP • PROJECT EXECUTION • OPERATIONAL
PLANNING LIGHTING, MATERIAL & FINISH DEVELOPMENT • CUSTOM DETAILING •
PROJECT EXECUTION • INTERIORS •

The Yacht Club at Bastian Riviera is a waterfront hospitality pavilion designed by Bricolage Bombay at the confluence of the Chapora River and the Arabian Sea in Morjim, Goa. Conceived as both a destination and an arrival experience, the project combines circular architecture, handcrafted timber construction, and immersive landscape connections to create a calm and timeless coastal retreat. Accessible by water via the restored river vessel Sir Tuffy, the Yacht Club serves as the ceremonial threshold into the Riviera experience — a place where architecture, water, and atmosphere become inseparable.

■ Designed Around the Panoramic Experience





A timber retreat at the edge of the Chapora backwaters.

Designed and developed a circular waterfront hospitality pavilion integrating architecture, interior design, dock planning, guest experience design, timber detailing, and coastal hospitality environments at Bastian Riviera, Morjim.

■
*The Coastal Experience,
Designed.*







■
*A Contemporary
Interpretation of Coastal
Living*



The Yacht Club was carefully planned as a circular waterfront pavilion that responds directly to the surrounding river, sea, and coastal landscape. Architectural layouts, dock integration, structural planning, timber detailing, interior design, and guest circulation were developed together to create a seamless hospitality experience shaped by light, breeze, water, and panoramic views. Through restrained architecture and thoughtful planning, the project transforms a simple coastal structure into an immersive arrival and social destination.

07. SUBKO CAFE | Lower parel, Mumbai.

■ A Pause Within the Museum

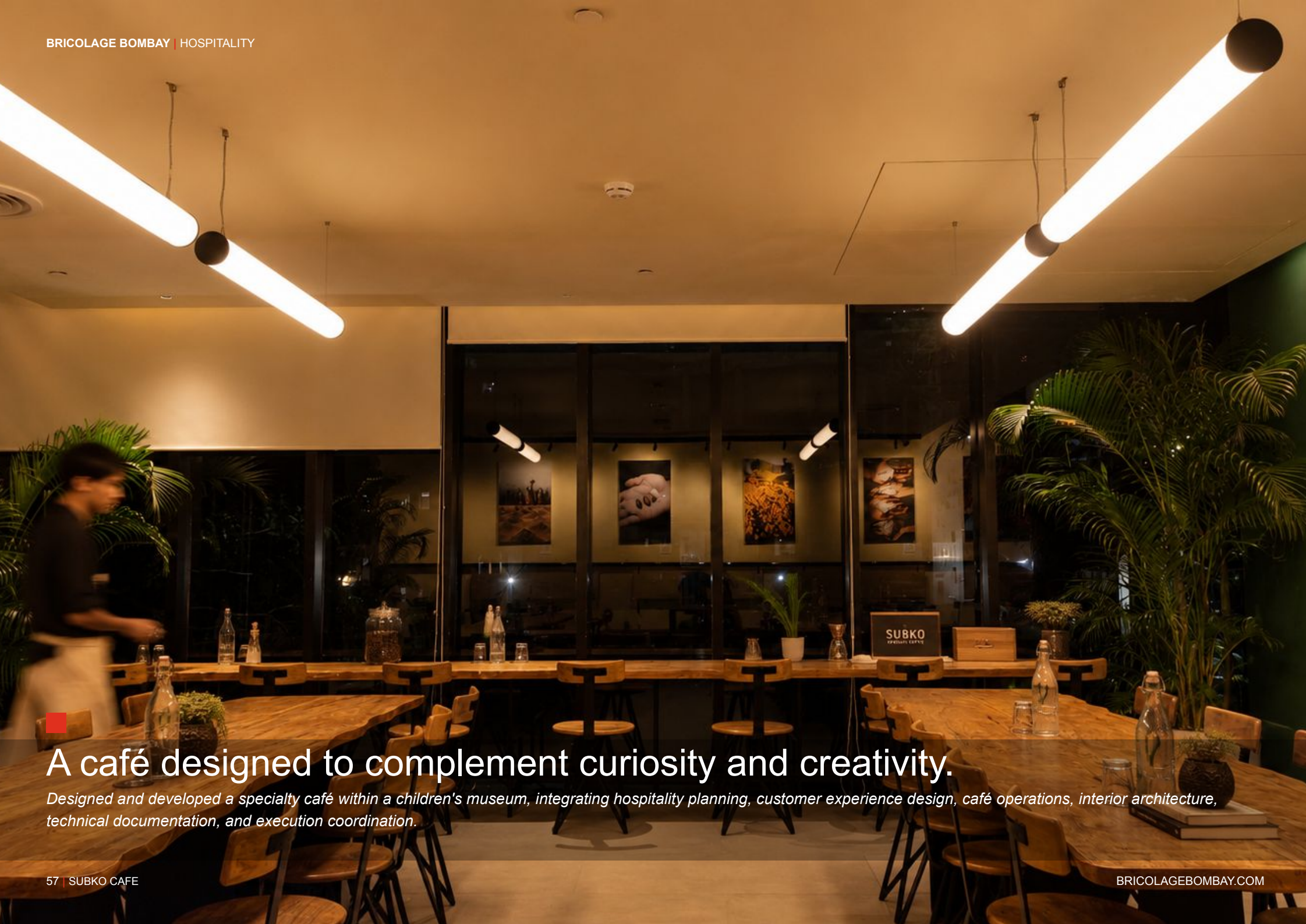
Lower Parel, Mumbai. | Subko Specialty Coffee roasters and Craft bakers | 1500 sqft | cafe interiors

• ARCHITECTURE • MEP • PROJECT EXECUTION • OPERATIONAL PLANNING LIGHTING, MATERIAL & FINISH DEVELOPMENT • CUSTOM DETAILING • PROJECT EXECUTION • INTERIORS •

Subko Café at MuSo is a specialty café and hospitality space designed by Bricolage Bombay within Mumbai's Museum of Solutions (MuSo). Conceived as an extension of the museum experience, the project balances the needs of children, families, museum visitors, and staff within a compact footprint. Through careful spatial planning, warm materiality, and a calm architectural language, the café provides a welcoming environment that complements the museum while maintaining its own distinct identity. Operated by Subko, the space combines specialty coffee, artisanal baking, and child-friendly hospitality within an engaging cultural setting.

ORDER HERE

A Space to Gather, Learn, and Recharge



A café designed to complement curiosity and creativity.

Designed and developed a specialty café within a children's museum, integrating hospitality planning, customer experience design, café operations, interior architecture, technical documentation, and execution coordination.





■
The Social Corner of
MuSo.

क्राफ्ट CRAFT کرافت
BUILT FOR BACCHAS
*FOR ADULTS TOO

COATED

BIG CUBE

FILLED

EXPERIMENTAL

DARK MILK WHITE

TERROIR

Subko at MuSo was carefully planned as a hospitality space that supports the museum experience while functioning as an independent destination. Through strategic circulation planning, optimized layouts, child-focused design interventions, operational efficiency studies, and warm material choices, the project creates a welcoming environment that balances learning, hospitality, and community within a compact footprint.



08. INDRIYA MISHRAN | Andheri E, Mumbai

■ The Art of Fine Dining

Andheri E, Mumbai. | Indriya Mishran | 4000 sqft across two floors | Restro Bar Interior

• ARCHITECTURE • MEP • PROJECT EXECUTION • OPERATIONAL PLANNING LIGHTING, MATERIAL & FINISH DEVELOPMENT • CUSTOM DETAILING • PROJECT EXECUTION • INTERIORS •

Indriya Mishran is a fine-dining restaurant designed by Bricolage Bombay, where architecture, materiality, and lighting are carefully orchestrated to elevate the dining experience. Conceived as a contemporary continental dining destination, the project balances warmth, intimacy, and sophistication through a restrained palette of lime plaster, terracotta, terrazzo, timber, and custom-crafted furnishings. Distributed across two levels, the restaurant combines vibrant social spaces with intimate dining alcoves, creating a layered hospitality environment that enhances both food and conversation.

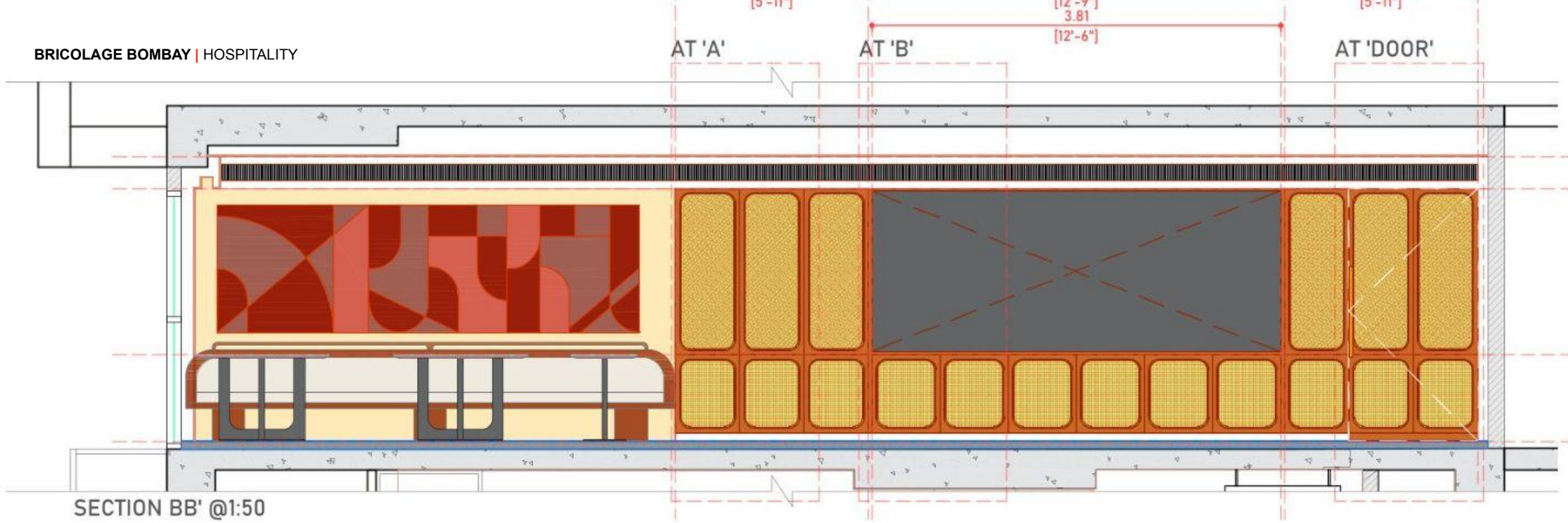
A dining experience shaped by light, material, and atmosphere.



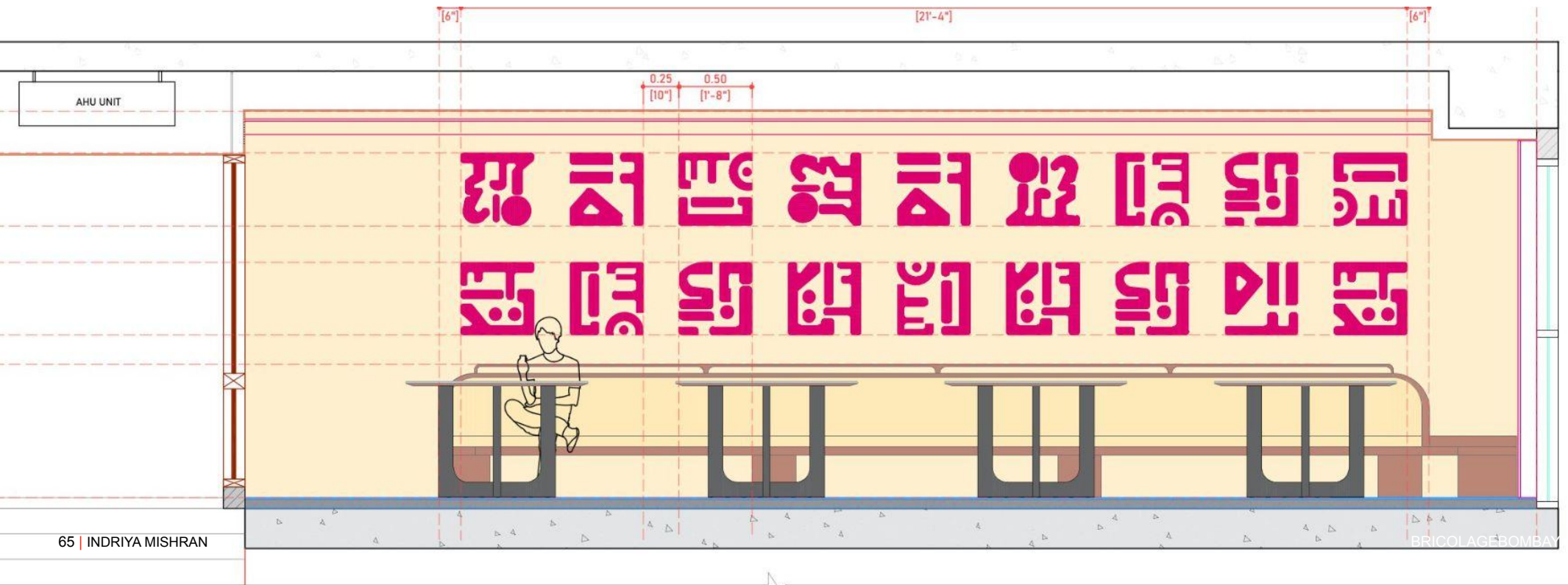
Building Experiences Around the Table

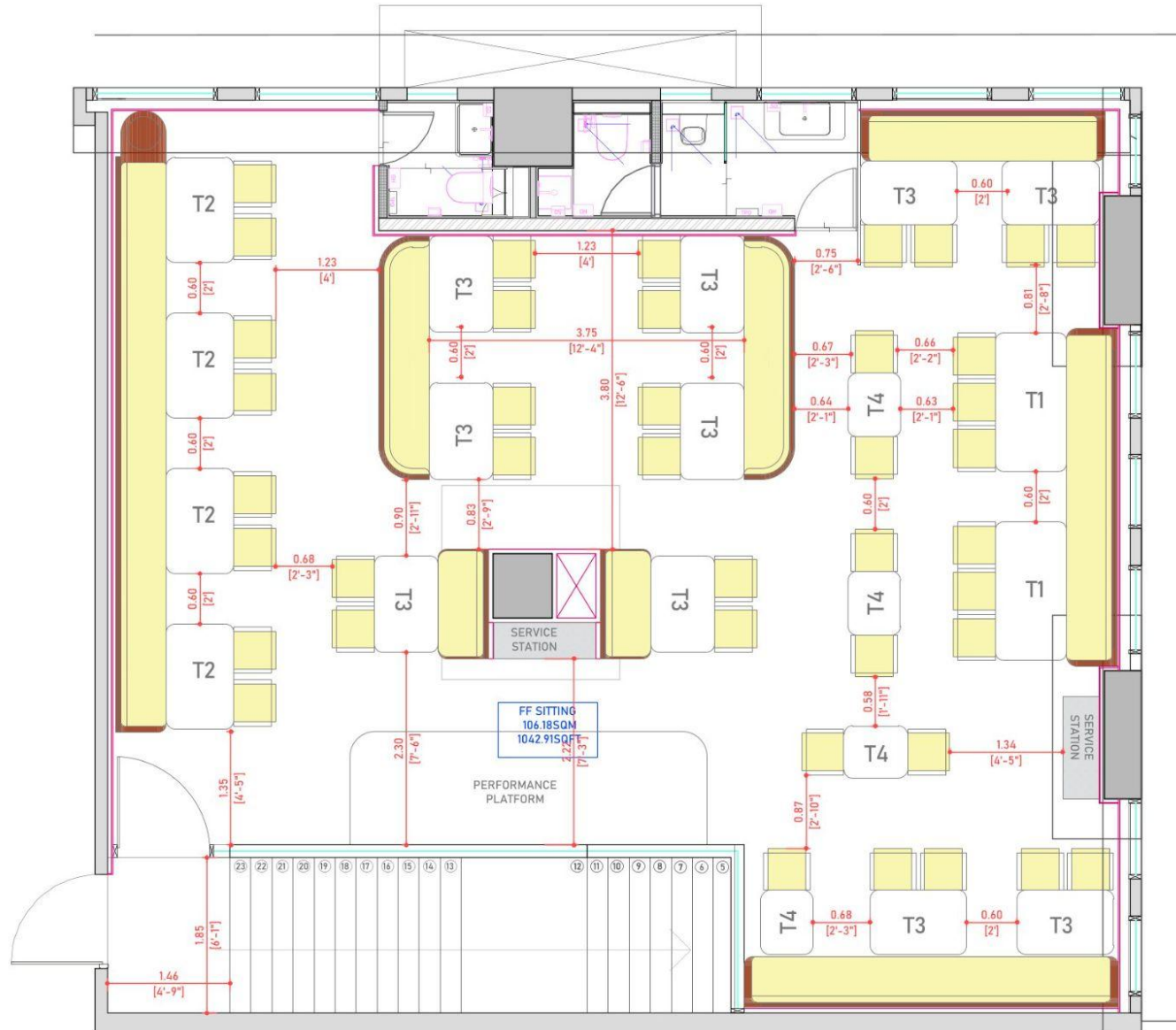


■ Central custom-designed bar serving as the focal point of the restaurant.



SECTION BB' @1:50





The Architecture of Dining.

Indriya Mishran was carefully planned as a contemporary fine-dining destination where hospitality, architecture, and operations function as a unified system. Through strategic restaurant planning, bar integration, service coordination, custom furniture design, material development, and lighting studies, the project creates a balanced environment that supports both efficient operations and an elevated guest experience



इंद्रिया मिश्रान रेस्टोरेंट्स प्रा. लि.
INDRIYA MISHRAN RESTAURANTS PVT. LTD.
Liquor Licence No. FL III 2657
Licensee Name: Mr. UC Singh
Ground Floor G-5/6/7, AT PLOT 107, Mahabul Choo Road,
Anandhi East, Mumbai, Maharashtra - 400083
Timing : 11:30 AM - 1:30AM



Contemporary hospitality expressed through craft and detail.

Hospitality Through Architecture.

LET'S CREATE
WHAT'S NEXT?



Bricolage Bombay

Tell us about your team, your goals, and your ambitions.
Together, we'll transform ideas into meaningful outcomes.